

### 2801/10-12 Sickle Avenue Hope Island QLD

2  2  2 

This brand new 2 bedroom 2 bathroom apartment offers an open-plan living and dining area complemented by contemporary finishes in a resort style complex set in a unique 9300sqm waterfront site. With contemporary interiors designed with style and functionality this brand new apartment ticks all the boxes.

Enjoy leisurely walks along the boardwalk overlooking the marina and the relaxing vista. Conveniently located in walking distance to shopping centre, cafe, restaurants and tavern.

Don't miss your chance to secure this brand new property with exceptional lifestyle facilities and low Body Corporate of approximately \$70pw.

**Type** : Apartment  
**Price** : \$1,050,000  
**Building Size** : 118 sqm  
**View** : <https://www.eraqld.au/8153508>

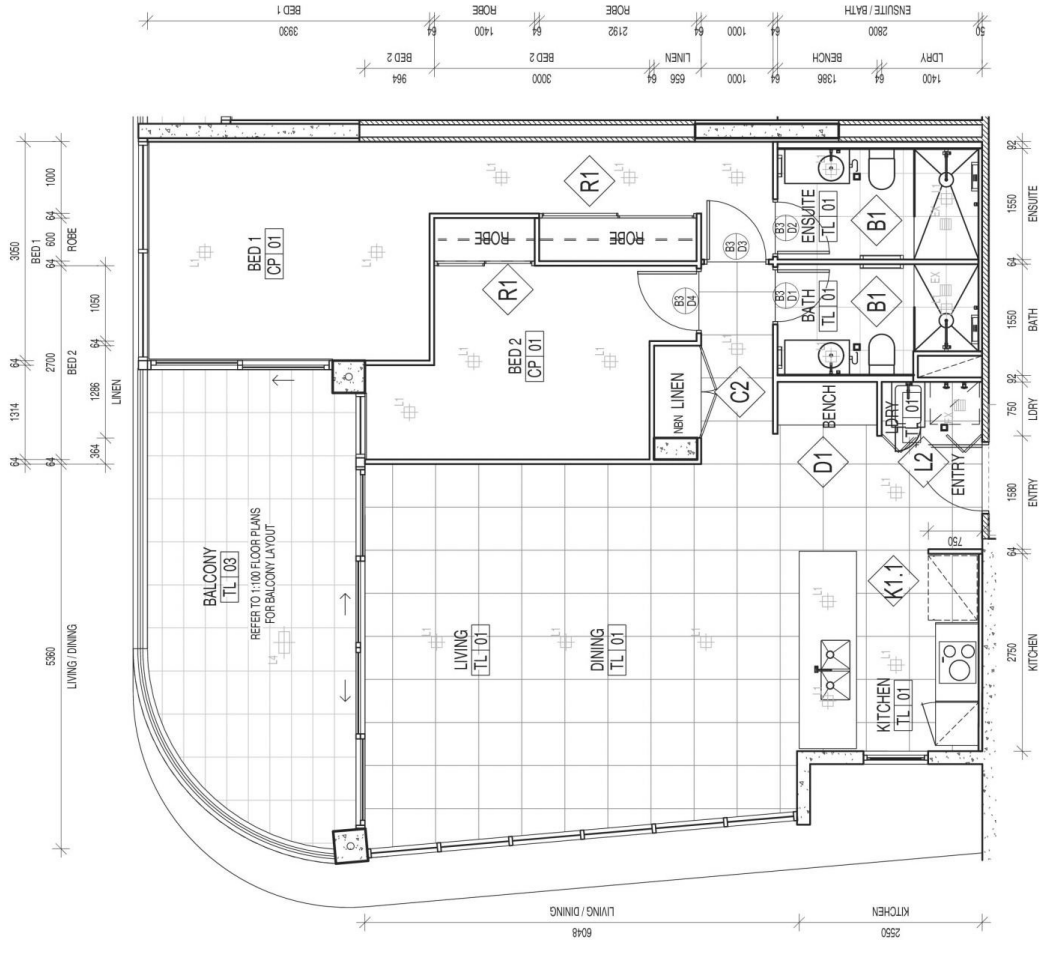


**Alex Caraco**  
1300 982 888



**Micheal McCarthy**  
1300 982 888

[For full version visit the website](https://www.eraqld.au)



Final installed dimensions and clearances are subject to site condition, will be altered to suit without notice.

1 TYPICAL LAYOUT PLAN 1:50